

We meet at:

St John's United Reformed Church Hall
Lynwood Grove Orpington BR6 0BG

We meet on:

The first Saturday of each month
9am-1pm. New members welcome!

The Woodentops is the SE London and W Kent Branch of the BWA



Facebook: Woodentops Woodcarvers

Twitter: #carverofwood



And some months,
mid-month meetings
too! –see last page

Transfer a photo onto your carving...

This idea is from Sydney Gallup, found at:

<https://uk.pinterest.com/pin/446137906816892015/visual-search/?x=0&y=0&w=564&h=1123>.

The 'gel medium' referred to can be purchased on Amazon or eBay, or of course from craft shops. Similarly, the 'Mod Podge' referred to is a sealer, glue and finish, available from Amazon or Hobbycraft. You could try transferring a photo to one of your carvings, for example a photo of an eye on a carved eye, a background landscape onto that relief of a country cottage that you have been working on, or a picture of your home in the corner of that house number you are carving out. While traditionally, British carvers generally shun paint on carvings, this idea adds a new dimension and could be worth an experiment or two. The possibilities are endless.



Cover wood with gel medium



Place paper picture face down on the wood surface



Firmly smooth out all bubbles



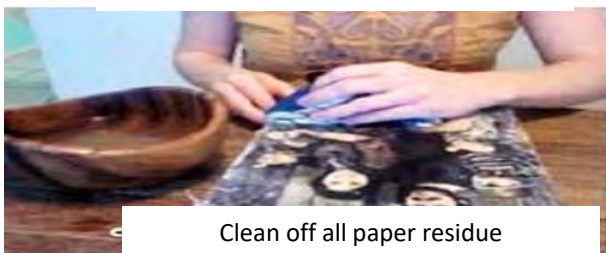
Let dry overnight



Wet the surface



Gently rub the wetted paper off



Clean off all paper residue



Cover with mod podge



Let dry



Voila!

Renovating Old Chisels (reprise)

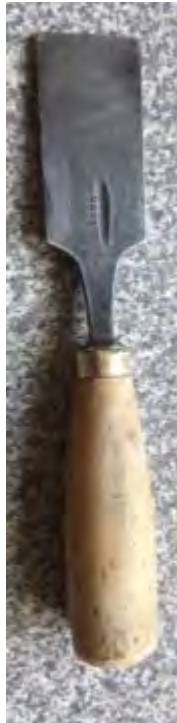
Oh dear – the feature last month on renovating old chisels neglected the publication of ‘before’ photos. Only the finished article was shown. To correct this error, here’s a recap.



Old chisel bought for a quid



Sanded under running water with fine wet and dry sandpaper and Jif



After washing and sanding



Handle polished



Ferrule reburnished, blade sharpened and ready for anything

Hair Today...

Having trouble carving hair? Pop into your local M&S (or other High Street clothing store) and look at how hair is represented on the dummies. There is quite a lot of skill in many of them and you might learn a thing or two about the fall of hair, perhaps while your partner shops. Even highly stylised hair representations (bott. right) can be helpful



<https://www.bing.com/images/search?q=Window-Dummy&view=detailv2&id=223722480780D3E2E8D640CBB3A9384350882308&sel=Index&ccid=va7wsl1B&simid=608010247526350956&thid=OIP.Mbdae10b22d4181a8173e07bb67d006&cc=asin&cc=asin>



http://thumb1.shutterstock.com/display_pic_with_logo/859102/345800858/stock-photo-shop-dummy-fashion-child-mannequin-in-store-boutique-shop-window-artistic-photo-345800858.jpg

More Shots from Members



This highly decorated plaque was spotted in Walmer Castle, Kent. All wood, this superb piece of pierced deep relief work celebrates marine victories. Walmer Castle is well worth a visit, by the way. And the Duke of Wellington died there (not a lot of people know that!)



These 'found wood' sculptures seem to be cropping up everywhere.

Usually with a hefty price tag, they are made from driftwood cleverly nailed together.

This couple was spotted in a National Trust shop, and if they are in one, they will be in all of them.

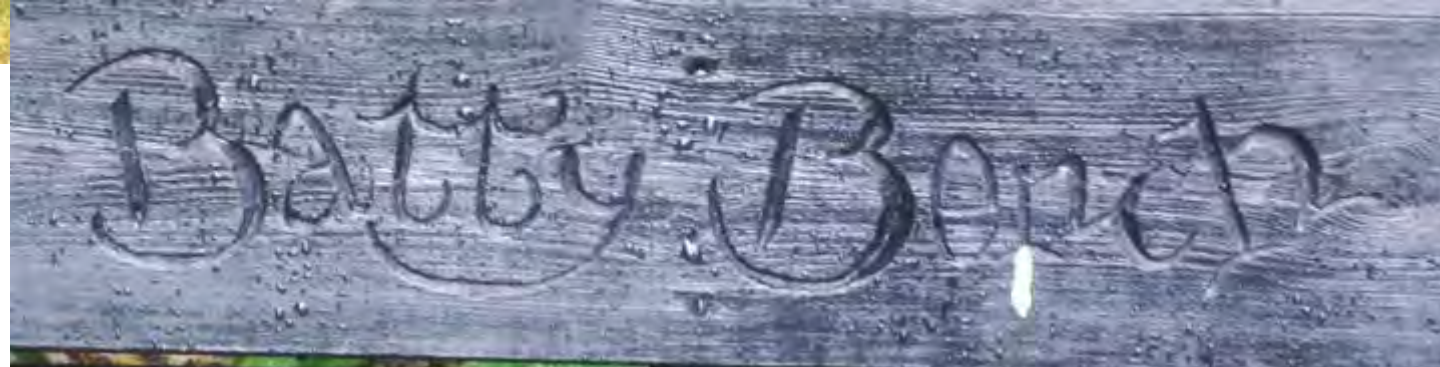


The head is priced at £150 (label left). Bet you could do better!

Odds and Ends



Two benches in Tyneham, Dorset displayed clever lettering carved in the wood. Unusual and attractive styling.



Not exactly carved, but this impressive wooden castle must have taken an age to make and is worth a mention. It was seen at the Chelsea Flower Show earlier this year.

Mask with graffiti posted by Stephen Best on Facebook. Provenance unknown



This example of fossilised wood was also seen in Tyneham, Dorset. This begs the question as to whether it was chiselled out by fossilised carvers

Club News

Cakes

November: Jane



Website: The Club has registered a new domain name - 'www.woodentopscarvers.co.uk' so we will be starting from scratch. The website will now be built with the help of previous Club member and friend of the Club, Sue Medley, who has kindly agreed to assist us. Sue lives in Yorkshire so will be helping us from afar.

We are assisting at Surrey Wood turners' Show 19 November. If you are free to assist, please tell Tom or Ann. These are the details from organiser Neil:

The event is in the St Francis Hall, Ravenswood Avenue, on the 19th November. We open to the public at about 10am and go on until about 4pm. I think the hall is opened up at 9am so we have an hour to set up. I will confirm this closer to the time.

It is not a huge hall, but we manage to cram a lot of stuff in it! It is nicely situated just off the high street opposite a large car park. Parking isn't cheap, so last year I unloaded the car and drove down Ravenswood until I found a space on the road.

We set the hall up with several tables in the middle where our members sell their stuff. The club takes 15% of whatever they sell. Around the perimeter we have a couple of lathes running with our members demonstrating. There are also other wood-related craft demonstrations (Pyrography and Rural crafts), and sales of timber, tools etc.

Christmas Planning. It was it was agreed amongst those present at the last main meeting of the Group that as all present were too busy, the only solution would be to defer it until January. Everyone there thought that this would a good idea. So we will need to agree details very soon.

And finally

A reminder that we will be assisting at the 2017 Hever Summer Craft Show. Details in the New Year.

Why not go to the **Tool fair at Sandown Park** on 3 and 4 November? Promises to be a great day out.. A huge range of tools and equipment will be on show.

Register at <http://toolfair.info/>



Leader:	Ann High	01689 859617	highmorton@tiscali.co.uk
Treasurer	Cathy Thomas	01689 829646	Thomascathy@virginmedia.com
Secretary/ Newsletter	Clive Nash	0208 4648902	clivewoodentops@outlook.com
Beverages	Mary Paddick	07929 051373	Marye.paddick@sky.com
Committee	Terry Vincent	01689 827680	terence.vincent@mypostoffice.co.uk
Committee	Tom Young	01689 851500	thomas.young67@ntlworld.com



2016 Main Meetings
(Carving, coffee & cake, an opportunity to bring guests and potential new members, occasional guest speakers)
All 9am to 1pm, Saturdays

2016 Additional Meetings
(No frills, just carving)

All 9am to 1pm, Saturdays

6 November

[No extra November meeting]

3 December

[No extra December meeting]