


A Club in South East London  
for people interested  
in wood carving

Visitors are very welcome

Website:

[www.woodentopswoodcarvers.co.uk](http://www.woodentopswoodcarvers.co.uk)

 Woodentops Wood Carvers

 #Carverofwood

# Newsletter

of The Orpington Woodcarving Club

Also known as the:



## July 2022

**We meet at:**

St Johns United Reform Church Hall  
Lynwood Grove Orpington BR6 0BG

**We meet on:**

The first Saturday of each month  
Full details of our meetings and  
much more on our website.

## A New Beginning..

We have had several meetings in 2022 and now (we hope!) the worst of Covid is behind us, we can start to confidently plan for the future, with our regular monthly meeting on the first Saturday of each month.

*Pre Covid, we also had mid-month meetings. These will not take place for the time being as we build up our Club again.*

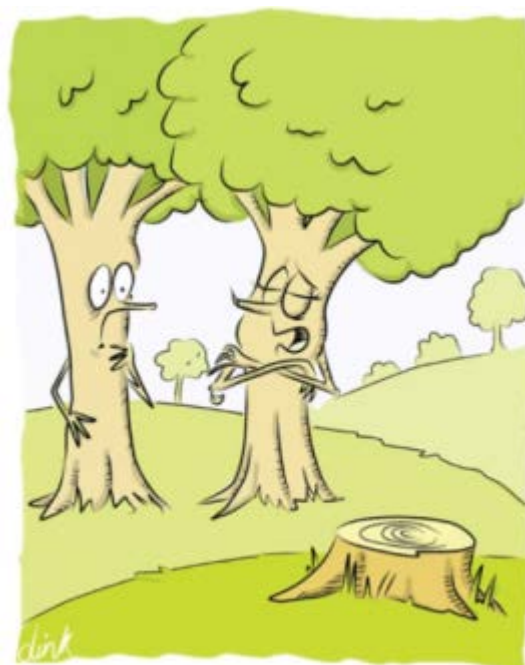
Ann has been our leader for some time now – over a decade in fact! And what a great job she has done, holding us all together for such a long period of time. She has now decided to step down from that position. The Club thanks her for her enormous hard work and dedication to the Club. She will still be a very active member and we all look forward to her participation in the future without the burden of leadership duties.

This means we don't have a leader at present – but not to worry, this shouldn't stop us surviving and prospering! Andrew remains our treasurer and Clive is still the secretary, planning to get the Newsletter up and running on a monthly basis again. Tom is on the Committee too. So we are not short of help (or of carving talent, of course, among our group).

We do need to build up Club members, though, post-Covid, so do try to come to our regular meetings. Bring your suggestions for the Club too. Maybe you would like to have the odd speaker or demonstration? Let us know. And if you have friends who are interested in carving, bring them along. There are not many carving clubs around – in fact we are unique to SE London – but at the same time there are very many people who are interested in the craft, so between us, let's try to get some if them to come along.

We plan to resurrect tea, coffee and cake for future meetings, with a voluntary small donations just to cover costs.

Our next meeting is the first Saturday in July – **2 July**. Hope you can make it.



OH YES WE'RE VERY PROUD OF HIM.  
HE'S IN PUBLISHING YOU KNOW!

Treasurer	Andrew Cheesman	07843 274363	<a href="mailto:andrew.cheesman@hotmail.co.uk">andrew.cheesman@hotmail.co.uk</a>
Secretary/ Newsletter	Clive Nash	0208 4648902	<a href="mailto:clivewoodentops@outlook.com">clivewoodentops@outlook.com</a>
Committee Member	Tom Young	01689 851500	<a href="mailto:thomas.young67@ntlworld.com">thomas.young67@ntlworld.com</a>

## Dragon at Charleston



Charleston, in Furl, Sussex, was the country home of some of Virginia Wolfe's relations. This carved dragon boat was spied there.



With its typical Eastern carving style, and rather menacing face, this carving shows great skill, which is clearly evident despite its weatherworn appearance.

Charleston is a fascinating house and welcomes visitors. Its website is: <https://www.charleston.org.uk/>

## Trevice House

Trevice House is a National Trust property in Cornwall. It sports a number of interesting carvings, not least the relief carving on this old chest, supporting a turned bowl which (the guide said) is several hundred years old.

In the same house were two carved wall adornments, firstly a charming Green Man supporting a shelf, and the second a rather fearsome looking bust of Queen Elizabeth the First.



The Green Man might make an interesting carving project. I have other shots of it from the side, and can send these on to anyone who is interested in copying this object.

I'm sure the Queen is saying 'I am not amused' even though that phrase is attributed to Queen Victoria. Her eyes really capture her mood!



# Lostwithiel



The splendid seat back above was spied in Lostwithiel, Cornwall. She has a slight vampireish look, but that is just how the light has struck it.



The impressive relief trellis work is from Lanhydrock, a Manor House also in Cornwall.

Unfortunately, if you look closely, you will see the woodworm.

**Now I've sent you my holiday snaps, why not send me some of yours? If you have any shots of carvings, please send them through and I'll put them in the Newsletter**